

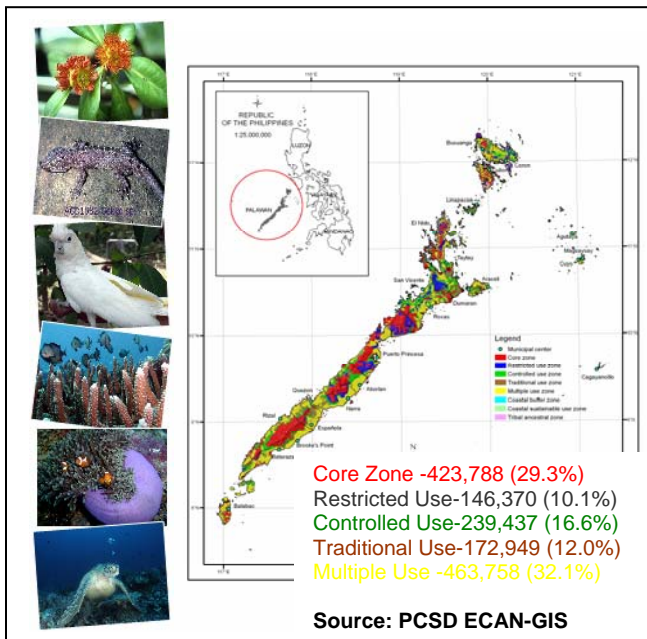
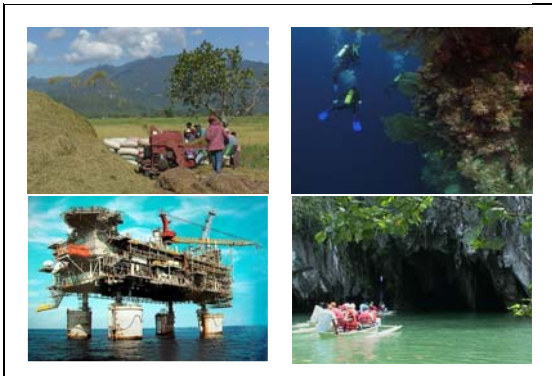
3rd World Congress of Biosphere Reserve (4-9 February 2008, Madrid, Spain)

COUNTRY: PHILIPPINES
PALAWAN BIOSPHERE RESERVE



Declaration date: 27 March 1990
Land surface area: 1,489,600 hectares
Administrative division: Palawan Province
Protection classification: Republic Act 7611, The Strategic Environmental Plan (SEP) for Palawan Act, 1992

Human Activities:



Ecological Characteristics:

The province of Palawan is known as the Philippine's "last ecological frontier". The Palawan BR is an archipelago composed of main island and more than 1,700 islands. It is endowed with rich natural resources and highly diverse flora and fauna found in both land and sea. Based on the IUCN classification, it has 105 out of the 475 threatened species in the Philippines. Of the 105 threatened species, 67 are endemic to the Philippines, while 42 of the 67 Philippine endemics are Palawan endemics.

Its coastal and marine ecosystems include coral reef (379 species of corals), seagrass meadow (13 species), and mangrove (31 species, distributed in 44,500 hectares of mangrove forests, the highest remaining mangrove cover in the Philippines). It also harbors several marine mammals such as marine turtles, dugong, and whale shark.

The characteristics of terrestrial and freshwater ecosystems are also diverse. It is composed of old-growth and second-growth tropical rainforest, karstic limestone, forest over ultramafic rocks, casuarinas and beach forest. They serve as habitats to freshwater fish (total of 18 Philippines endemics), amphibians (26 Philippines endemics), reptiles (69 species), birds (279 species), migratory birds, terrestrial mammals (58 species, 16 are Palawan endemics).

The total population in 2000 is 755,412 with an annual population growth rate of 3.6%. The Palawan BR is also home to approximately 57 ethnolinguistic groups with 3 indigenous peoples: the Tagbanua, Palaw'an, and the Bataks. The major economic activities are agriculture and fisheries. Other important industries are tourism, on-shore and off-shore mining, gathering of minor forest products, and pearl farming.

Two known World Heritage Sites are present in Palawan BR: the Puerto Princesa Subterranean River National Park and the Tubbataha Reef Natural Park. These and 5 other sites are declared protected areas under the National Integrated Protected Areas System.

Source: Palawan Council for Sustainable Development Staff, Provincial Government of Palawan, and Conservation International-Philippines

Photo Credits: All photos by PCSDS except Underwater photo for Tubbataha Reef National Park by Lene and Claus Topp and the button photos of Terrestrial and Aquatic Resources by CI-Philippines

Contact Information:

Office of the President
 Palawan Council for Sustainable Development
 PCSD Building, Sta. Monica Heights
 Puerto Princesa City, 5300 Palawan, Philippines
 Email: oad@pcsd.ph
 Tel. (63)-048-434-4235
 Tele-Fax: (63)-048-434-4234